

Installation Instructions

Descriptions

The luminaire contains constant-current driver(s) and LED module(s). It works under technical conditions as the product labels indicate. Its modular design makes it convenient to replace whichever of the modules that failed.

Technical Parameter

LED High Bay Light								
Module Quantity	1	2	3	4	5	6	7	8
Power	60W	120W	180W	240W	300W	360W	420W	480W
Input Voltage	<input type="checkbox"/> 100~240V <input type="checkbox"/> 100~277V <input type="checkbox"/> 220~240V <input type="checkbox"/> 120~277V <input type="checkbox"/> 277~480V <input type="checkbox"/> Other_____						Frequency	50/60Hz
Power Factor	0.95							
Working Environment	-40°C~+45°C, 10%~90%RH							
Mounting Height	4~25m							
Bolt Torque	17Nm							
Dimensions	95x360x200mm	175x360x200mm	255x360x260mm	335x360x260mm	415x360x360mm	495x360x360mm	575x360x360mm	655x360x360mm
Net Weight	3.6kg	4.7kg	6.0kg	7.3kg	9.5kg	10.4kg	11.9kg	13.1kg
Project Area	0.035m ²	0.063m ²	0.092m ²	0.121m ²	0.150m ²	0.179m ²	0.207m ²	0.236m ²
Degree of Protection	<input type="checkbox"/> IP54 <input type="checkbox"/> IP65 <input type="checkbox"/> IP66 <input type="checkbox"/> IP67 <input type="checkbox"/> Other_____							

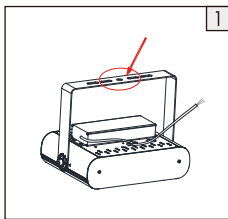
Notes: The above net weight is typical value. The power above are maximum rated power of the model subject to tolerance of 10%.

Applications

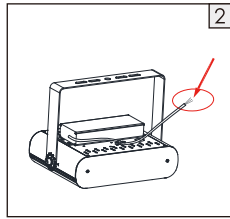
Large rooms such as venue, hall, warehouse, factory, gas station, sports center, mall, supermarket, exhibition center, etc.

Installation and Maintenance

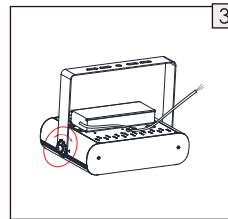
Installation



1. Mount the luminaire onto the ceiling or wall. (recommend M10 screws)

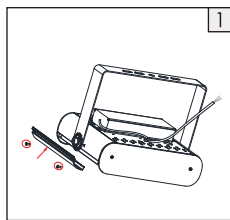


2. Connect to the L, N, and G wires of AC input correctly.

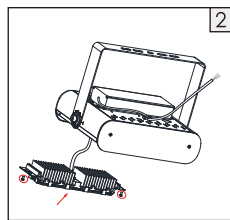


3. Loosen the screws at sides on bracket to adjust the fixture to a right angle. Then tighten up the screws.

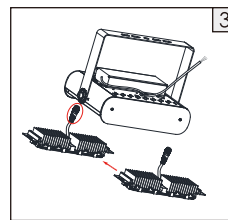
Maintenance



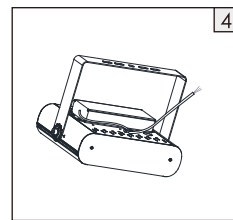
1. Undo the screws to remove the two side beam covers.



2. Undo the screws on ends of the module to be replaced, and plug it out.

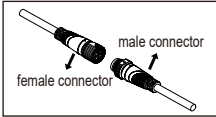


3. Undo the cable connectors. Replace with a new module.

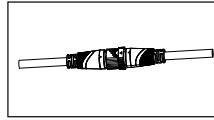


4. Connect the cable, fixate the new module with screws. Install the side beam covers back.

Cable Connectors



1. Connect the male and female connectors by aligning the indicative arrow on them.



2. Hold the nut on one terminal still, meanwhile, rotating clockwise till the one on the other terminals is tightened up. Otherwise the waterproof performance might be affected.

Wiring

Power Supply End	Earth wire	Neutral wire	Live wire
Fixture End	Yellow-green lead	Blue lead	Brown lead
	Green lead	White lead	Black lead

Caution

- a** Disconnect or turn off power before installation, maintenance and wiring.
- b** Cable connection must be insulated and waterproof.
- c** For luminaires with glass cover: the cover is made of tempered glass which shatters into small pieces without sharp edges when it breaks. Application condition: -30°C~100°C; maximum temperature rise $\Delta t 60^{\circ}\text{C}$.
- d** The light source of this luminaire is not replaceable. When the light source's lifetime comes to an end, it is the whole luminaire that should be replaced.

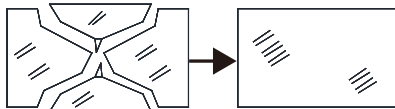
Warning: Danger! Electric shock risk!

(via IEC 60417-6042 (2011-11))

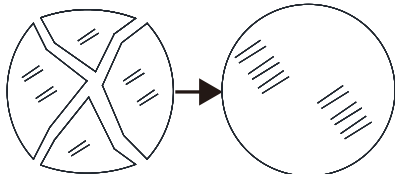


For luminaires with glass cover: The broken cover should be replaced.

Rectangle



Round



The luminaire shall be installed by a qualified electrician and wired in accordance with the latest IEE electrical regulations or the national requirements.



This marking indicates that this product should not be disposed with other household wastes throughout the EU. To prevent possible harm to the environment or human health from uncontrolled waste disposal, recycle it responsibly to promote the sustainable reuse of material resources. To return your used device, please use the return and collection systems or contact the retailer where the product was purchased. They can take this product for environmental safe recycling

Remarks

1. This luminaire uses permanent connection on power supply with flexible cable and wires (60245 IEC57). Sufficient length of cable is reserved for connection to AC power. Protection over the connection joint and elimination of tensile force there should be ensured.
2. This luminaire uses type Z attachment: the external flexible cable or cord of this luminaire cannot be replaced; if the cord is damaged, the luminaire shall be destroyed.
3. Wiring: the connection to AC power should be operated on terminal blocks in a wiring box with a degree of protection at least equivalent to the luminaire, and there should be devices to fixate wires.
4. The luminaire can be mounted onto ordinary combustible surfaces.