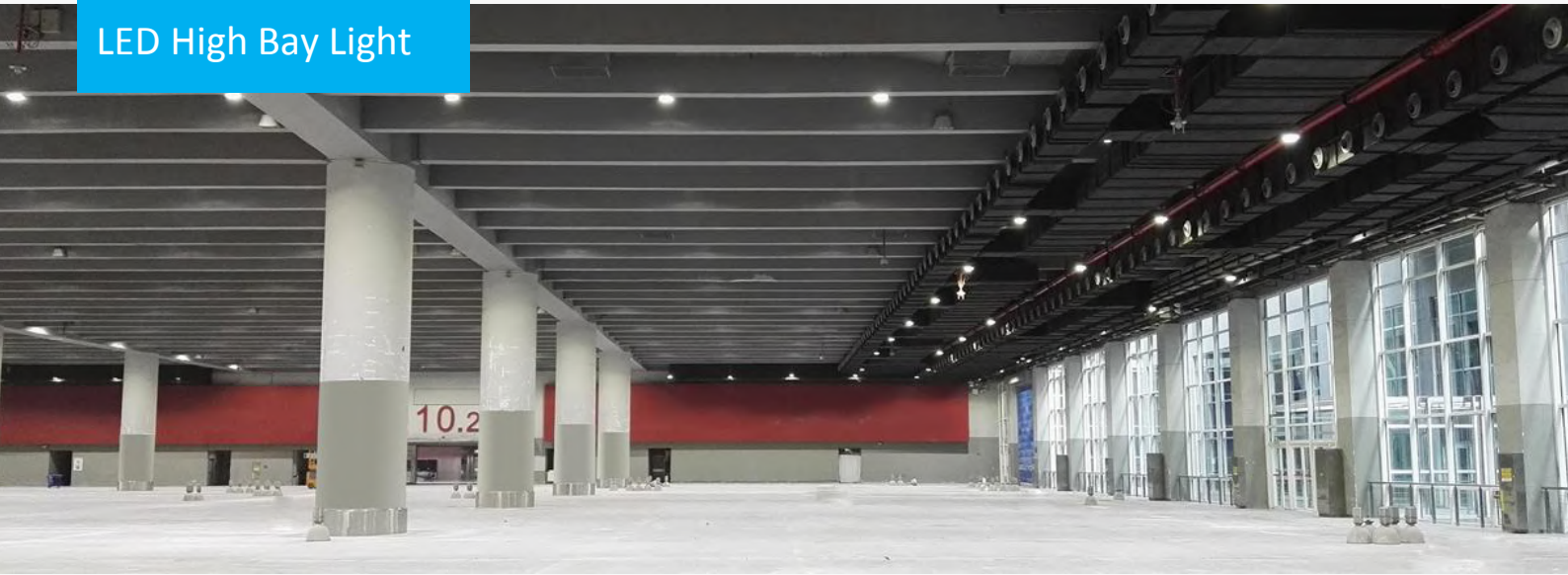


TF32 Series


LED High Bay Light



Specifications

Input Voltage:	100 ~ 277Vac
Input Frequency:	50 / 60Hz
Power Factor:	0.95
Surge Protection Level:	6kV line-earth
Working Environment:	-40°C ~ +50°C, 10% ~ 90% RH
CCT:	3000K, 4000K, 5000K, 5700K
CRI:	≥70
Housing:	Die-cast aluminum
IP Rating:	IP65
Warranty:	5 Years Limited

Finishing Colors

 Black Gray

Applications

- Factory facilities (plant, office, warehouse....)
- Area lighting (exhibition hall, convention center, garage....)
- Indoor sports facilities (gym, club...)

Features

Construction

- Whole structure heating dissipation design with efficient thermal conduction, radiation and convection.
- Integrated lampshade reduces glare.
- A round shape style continued from traditional lamps.

Optical

- Ergonomic and uniform lighting distribution designs.
- Unmatched lighting performance, driver stability and desirable lifespan;

Electrical

Wide coverage of power consumptions;

Photos



TF32 Series

LED High Bay Light

Ordering Information

Example: TF32C-N1-100-CA-120-3873-7040-LU-MO-BKGY

Luminaire Type		Module Qty		System Power		LED Package		Cable Standard		LED Qty	
TF	High bay light	N1	1 Module	80	80W	C	3030 LEDs	A	CCC+VDE	120	120pcs
32B	32B series			100	100W			C	PSE	200	200pcs
32C	32C series			120	120W			H	UL	240	240pcs
32D	32D series			150	150W			X	OTHERS	296	296pcs
				180	180W						
				200	200W						
				240	240W						
Lens Code			CRI & CCT			Brand of LEDs		Driver Brand		Housing Color	
3871	60 degree	3872	90 degree	7030	Ra≥70, 3000K	LU	LUMILEDS	MO	MOSO	BKGY	Black Gray
3873	60 degree	3874	90 degree	7040	Ra≥70, 3000K	XX	Others	XX	Others		
3875	60 degree	3876	90 degree	7050	Ra≥70, 3000K						
				7057	Ra≥70, 3000K						

Performance

Model	Power (W)	LED Quantity (pcs)	Efficacy (lm/W)	Flux (lm)	CRI	CCT (K)
TF32B	80	120	136	10880	≥70	3000, 4000, 5000, 5700
	100	120	129	12900		
TF32C	120	120	124	14880		
	150	200	134	20100		
TF32D	180	240	134	24120		
	200	240	129	25800		
	240	296	129	30960		

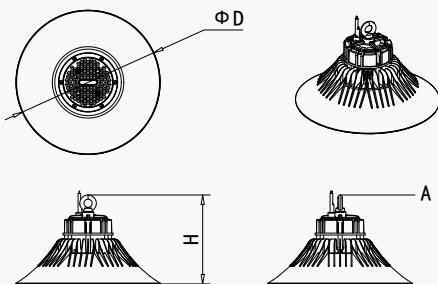
Note: 1. Values shown are subject to ±5%~±8% tolerance.

2. Efficacy and flux above refers to Ra70, CCT≥4000K. Efficacy of 3000K is 5% lower.

Product Dimensions

Model	Φ D (mm)	H (mm)	Hoisting Ring	N.W. (kg)
TF32B	Φ 380	235	M10	2.2
TF32C	Φ 450	270	M10	4.2
TF32D	Φ 555	300	M10	5.6

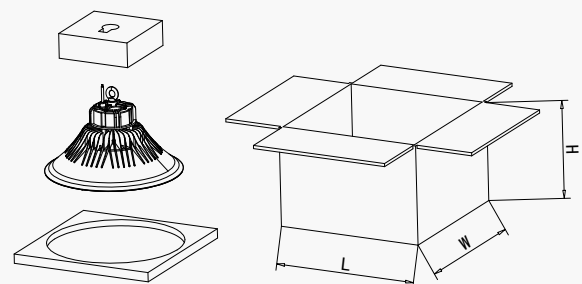
Notes: Typical values above. Tolerance of H and N.W. with different drivers: 5%



Package Information

Model	L (mm)	W (mm)	H (mm)	G.W. (kg)
TF32B	430	430	295	3.2
TF32C	500	500	320	5.6
TF32D	605	605	350	7.6

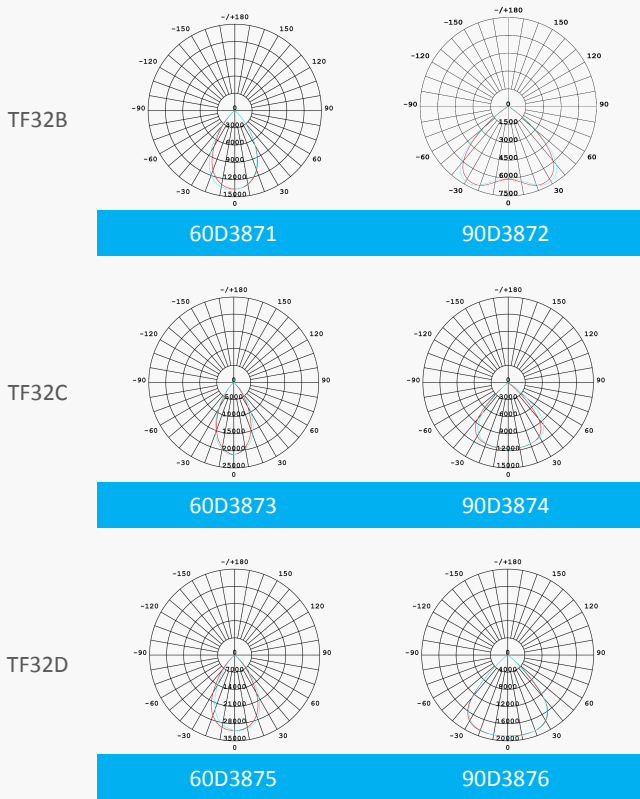
Notes: Typical values above. Tolerance of G.W. with different drivers: 5%



TF32 Series

LED High Bay Light

Typical Distributions



Version History

Change Date	Version	Item	Description of Change	
			From	To
2019/09/24	Ver 1.0	Datasheets release	/	/
2020/01/15	Ver1.1	IP rating	IP40	IP65